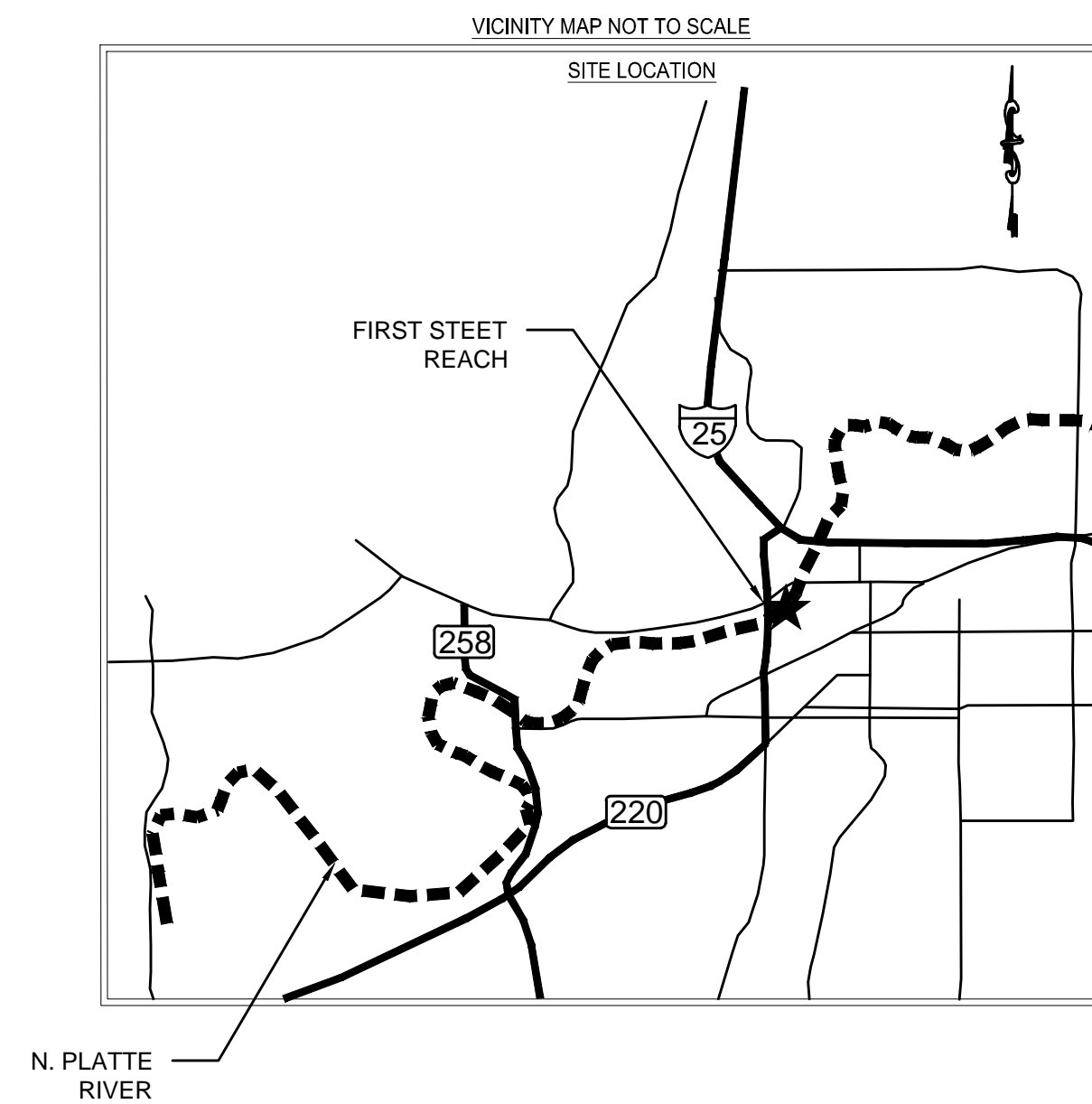


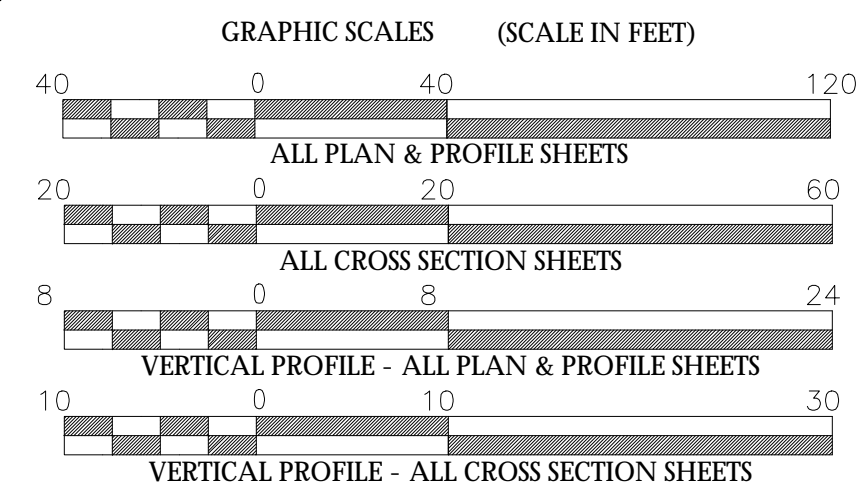
STATE	PROJECT NO.	SHEET NO.	TOTAL SHEETS
WY	172621100	COVER	13

# NORTH PLATTE RIVER RESTORATION FIRST STREET REACH

FEBRUARY 2021  
AS-BUILT PLANS  
NATRONA COUNTY, WYOMING




A		
SYM	DESCRIPTION	
	REVISIONS	



PROJECT LENGTH

RESTORATION = 2,548 FT

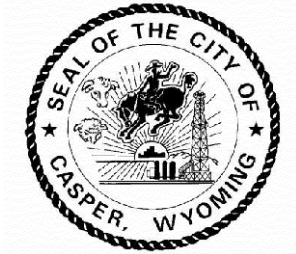
Prepared by:



**Stantec** Stantec Consulting Services Inc.  
3325 South Timberline Road, Suite 150  
Fort Collins, Colorado 80525  
www.stantec.com

TIMOTHY DINKINS  
PROJECT ENGINEER

Prepared for:



Scott Baxter  
PROJECT MANAGER





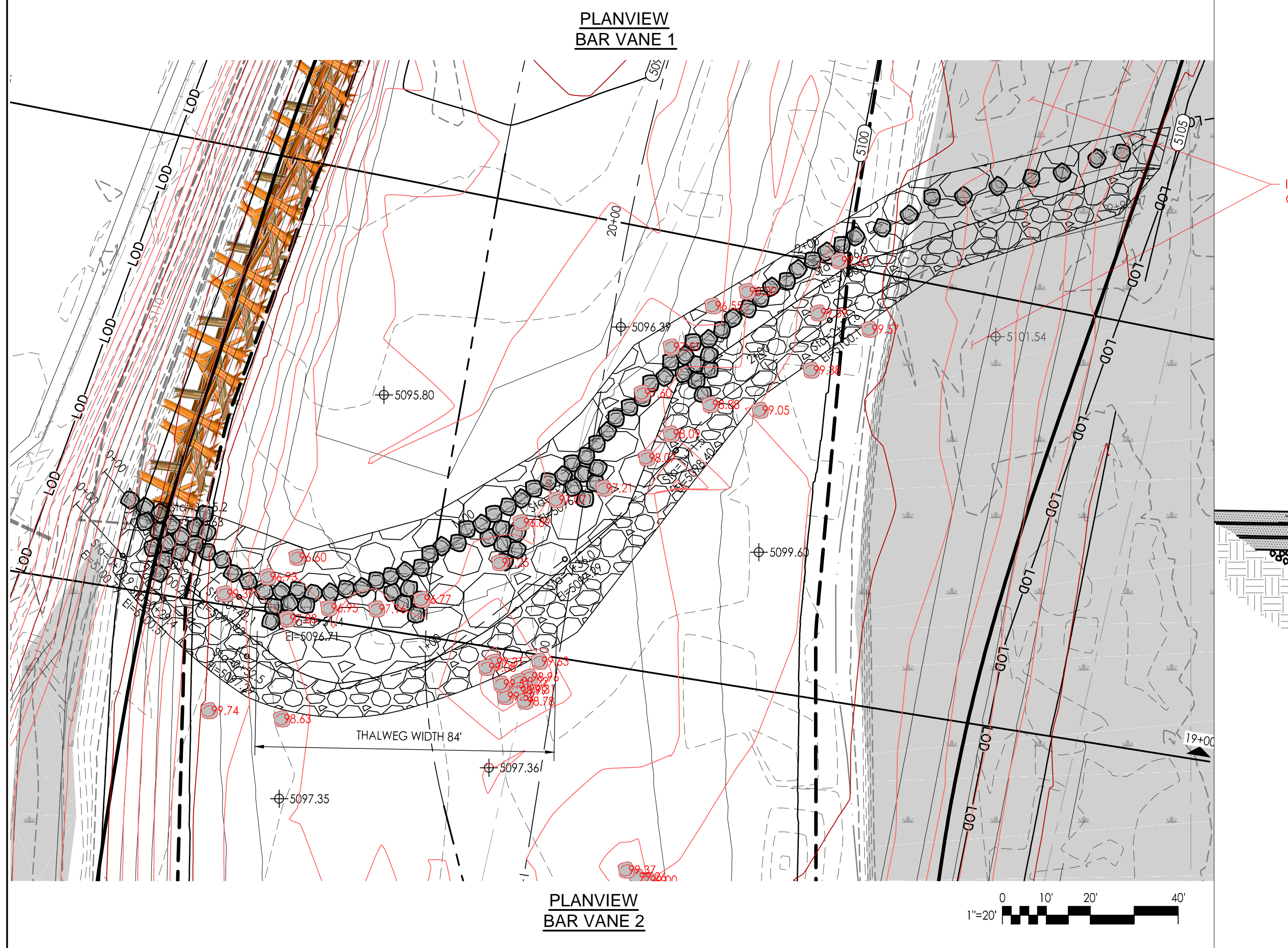
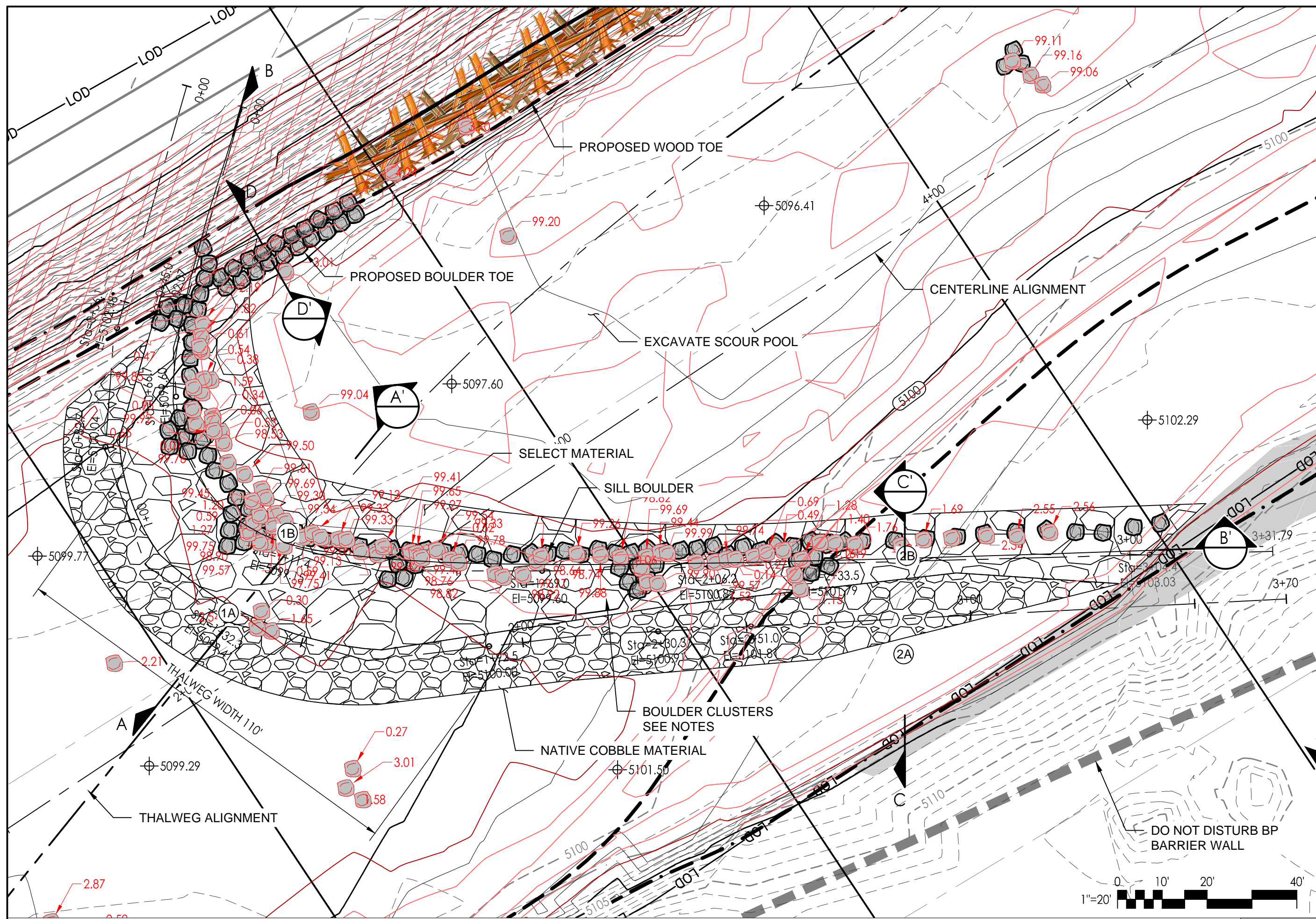






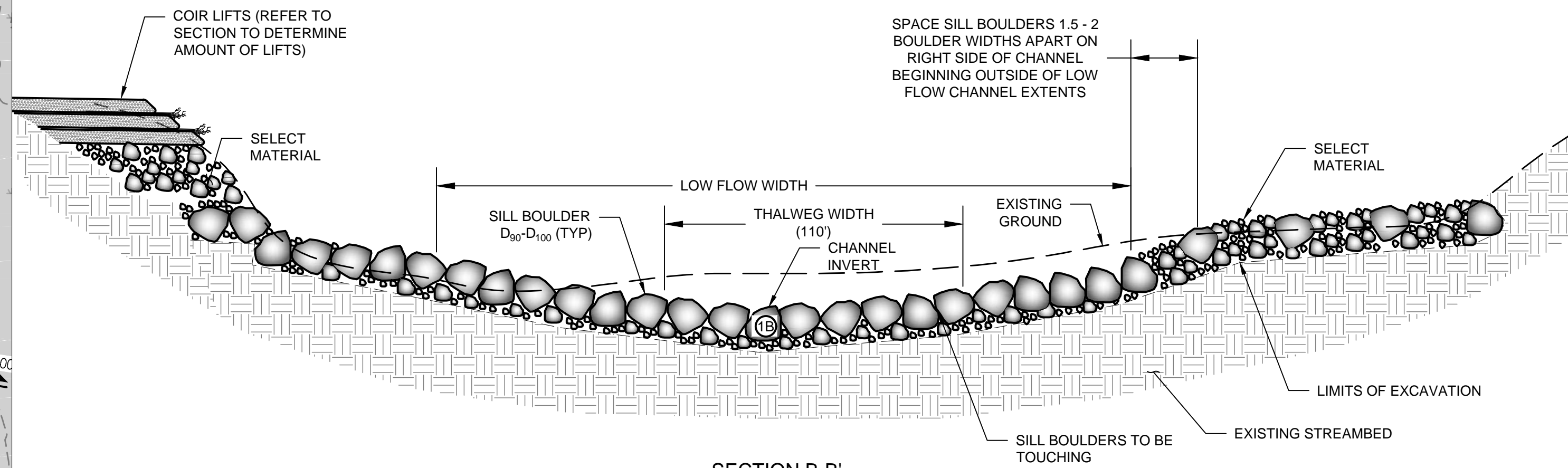
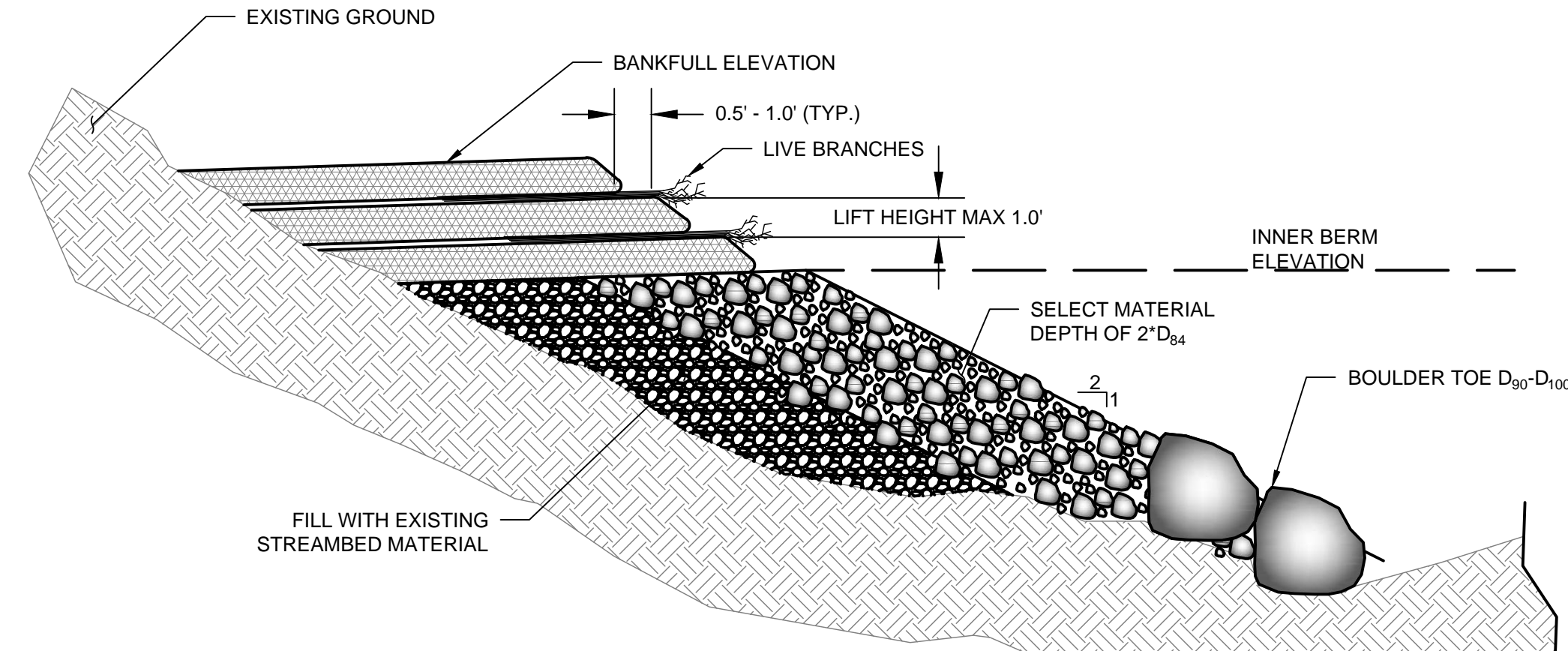
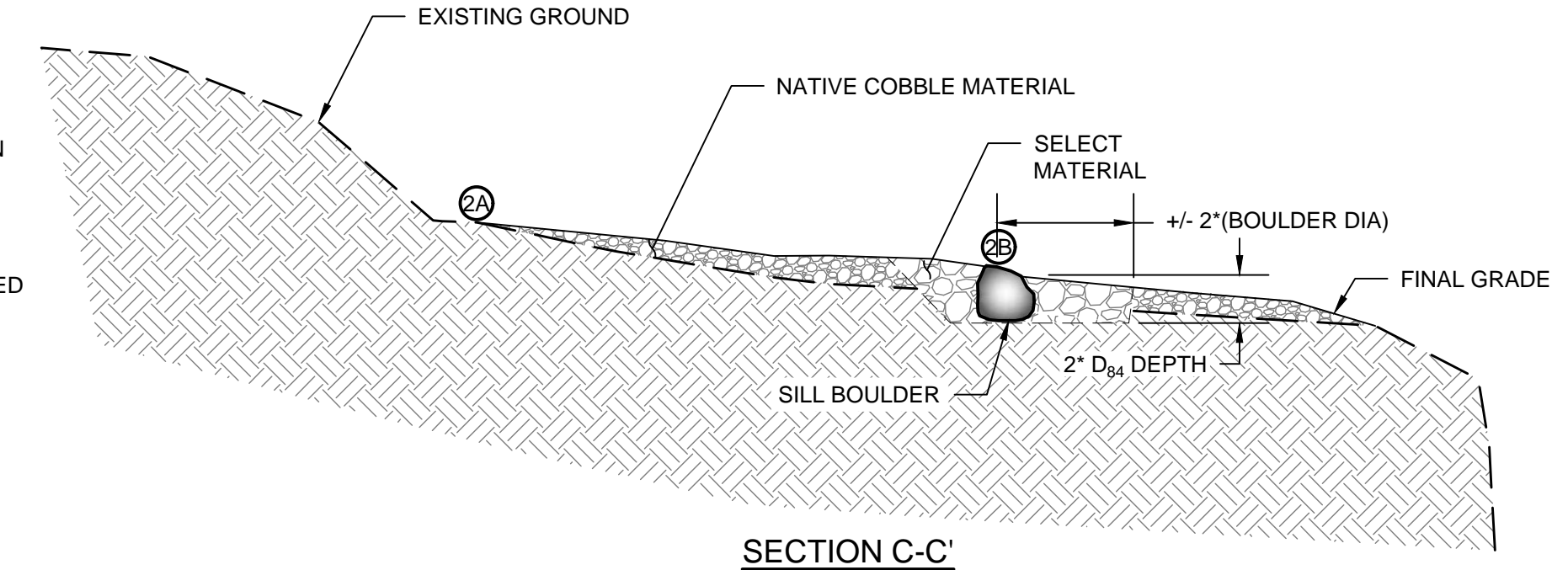
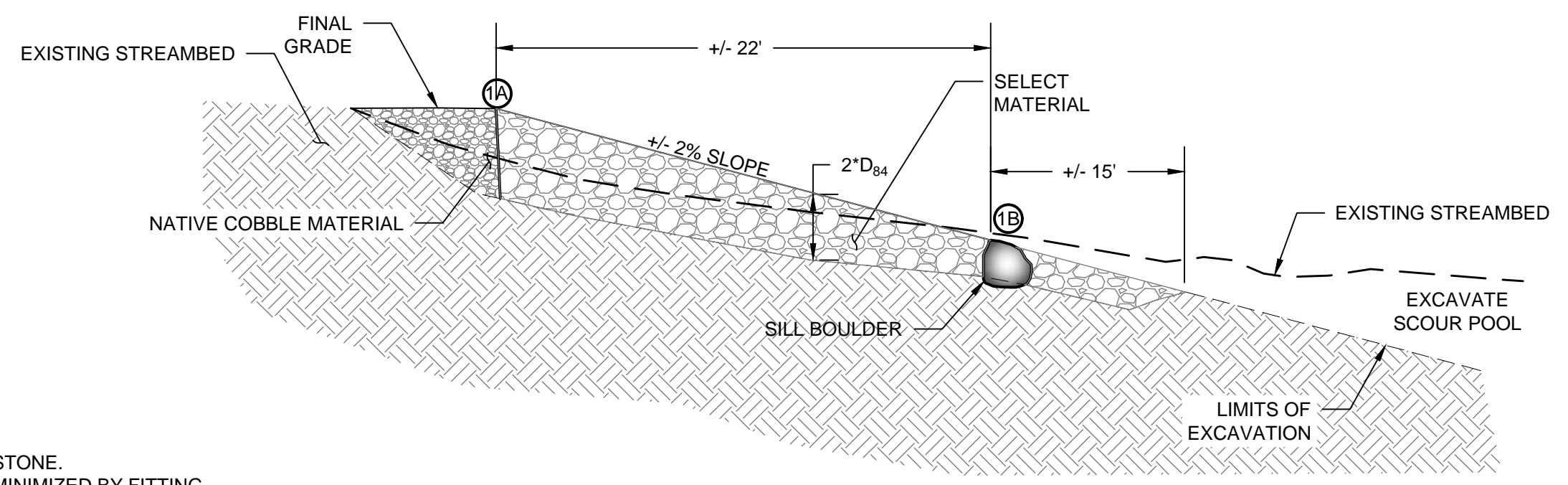






**NOTES:**

1. ALL STONES ARE TO BE STRUCTURAL STONE.
2. GAPS BETWEEN BOULDERS SHALL BE MINIMIZED BY FITTING BOULDERS TOGETHER, AND PLUGGING WITH RIPRAP AND SELECT MATERIAL. THE CONTRACTOR WILL BE REQUIRED TO FIT BOULDERS TIGHTLY.
3. DIMENSIONS AND SLOPES MAY BE ADJUSTED TO FIT BY THE ENGINEER.
4. VANE ARMS SHALL MATCH THE ELEVATIONS SHOWN IN THE PLAN VIEWS.
5. BOULDERS SHALL BE NATIVE STONE OR SHOT ROCK, CUBICAL OR RECTANGULAR IN NATURE.
6. ALL MATERIALS ARE TO BE APPROVED BY ENGINEER OR ENGINEER'S ONSITE CONSTRUCTION MANAGER.
7. SEE GENERAL NOTES PAGE FOR SELECT MATERIAL GRADATION AND BOULDER SIZE REQUIREMENTS.
8. BOULDER CLUSTERS SHALL BE PLACED ALONG THE UPSTREAM FACE OF THE SILL BOULDERS AND SPACED APART AT THE ENGINEER'S DISCRETION. THE TOPS OF THE BOULDERS SHALL PROTRUDE OUT FROM THE ADJACENT BED BY 1-1.5' AS DIRECTED BY ENGINEER.
9. FLAT POINT BAR IS LIKELY CRITICAL TO REDUCE STRESS ON BANK DURING PERIODS OF HIGH WATER.
10. ASSUME CLUSTERS ~ 3-4 BOULDERS
11. SET BOULDERS AS SILL AND SELECT MATERIAL LOOSE.



**1 DETAIL - BAR VANE**  
NOT TO SCALE

Revision	By	App'd.	Y/M/AM/DD	Issued

Client/Project  
CITY OF CASPER  
200 NORTH DAVID STREET CASPER, WY 82401  
NORTH PLATE RIVER RESTORATION  
FIRST STREET REACH  
CASPER, WYOMING

Permit-Seal

Title  
**AS-BUILT  
BAR VANE DETAIL**

**AS-BUILT**































